

Careers in Psychology:

Pathways and Preparation

Bachelor of Psychology graduates develop a number of competencies sought after by employers, making them competitive for a variety of professional roles. Some graduates continue with post-graduate qualifications in Psychology to become a registered Psychologist whilst others advance their careers in different ways, building on a solid and adaptable skill set including:

- oral and written communication skills
- interpersonal skills (e.g. empathy and cultural sensitivity)
- teamwork / collaboration (groupwork) skills
- research and critical thinking skills including data analysis
- ethical and professional conduct.

Our courses

Undergraduate (APAC accredited Level 1 courses)

- Bachelor of Psychology
- Combined Bachelor of Psychology & Bachelor of Criminology
- Combined Bachelor of Psychology & Bachelor of Laws
- Combined Bachelor of Psychology & Bachelor of Sport and Exercise Science

Further Study *competitive entry

Popular further study includes an *Honours year or Graduate Diploma in Psychology (APAC Level 2 courses) to increase employability and career options. Good grades throughout this additional year of Psychology study is also a minimum pre-requisite for *Masters qualifications, necessary for registration as a Psychologist. Options at Murdoch University include:

- Master of Applied Psychology (Professional) (APAC Level 3)
- Master of Applied Psychology in Clinical Psychology (APAC Level 3-4)
- Doctor of Psychology in Clinical Psychology (APAC Level 3 -4).

Develop your career before you graduate

- Join a Murdoch Guild Student Club such as the Murdoch Psychology Society (MPS) and get along to events. Tip: Taking on a committee role further impresses future employers.
- Volunteer with a not-for-profit in an area aligned with your career interests to increase your employability and professional network. Useful links below.
 - Murdoch Guild Volunteering
 - Australian Charities Register
 - Seek Volunteer / Volunteering WA
 - Samaritans WA Volunteer Counsellors
- Earn and learn: Apply for paid work at Murdoch University or in industry to develop our skill set (e.g. PAC / PASS Leader, Student Wellbeing Ambassador, Disability Support Worker, Mental Health Peer Mentor etc). Tip: Use keywords beyond "psychology" in your job search.
- Consider the "Students as Change Agents program" to help improve the student experience and coordinate a project to further expand your skill set.
- If there is room in your degree, pick up an additional minor (e.g. Indigenous Knowledges and Practices or Human Resource Management) or a short course.

Careers in Psychology:

Well suited to “Diplomats” and “Sentinels” (see [personality types](#))

Pathways to registration as a Psychologist

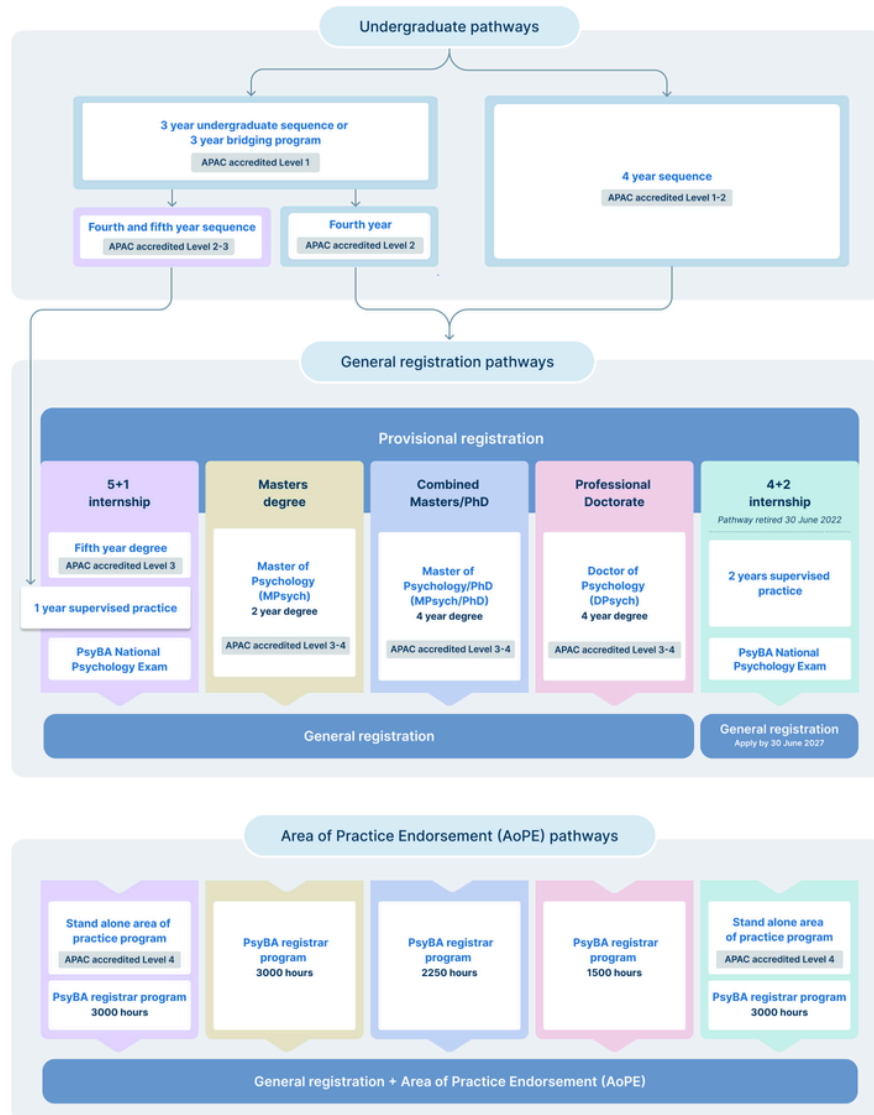


Image source and further information: [Aust. Psychological Society \(APS\)](#)

Areas of Endorsement

Beyond “General” Registration, there are various specialist practice areas ([endorsement pathways](#)).

- Clinical (a pathway option at Murdoch University)
- Community
- Counselling
- Educational and Developmental

(Note: “Graduate School Psychologists” have General Registration which is also a popular pathway option at Murdoch).

- Forensic
- Health
- Sport and Exercise
- Organisational

Alternative Careers

Some requiring further study / training

- Behaviour Support Practitioner (NDIS)
- Career Development Advisor
- Child Protection Worker / Field Worker- Dept. of Communities
- Coordinator of Corporate Volunteering
- Diversional Therapist
- Drug / Substance Abuse Counsellor
- Employment Consultant – Disability
- Equity Officer
- Housing Services Officer – Dept. of Communities
- Human Resources Officer / Analyst
- Leadership Development Advisor
- Marketing / Market Research Analyst
- Mental Health Support Worker / Trainer or Qualified Teacher
- Organisational Development / Change Management Specialist
- Policy / Project Officer
- Program Co-ordinator / Facilitator – (Rehabilitation, Youth Support etc.)
- Protective Behaviours Facilitator
- Psychosocial Recovery Coach (NDIS)
- Research Officer / Assistant
- Student Advisor / Wellbeing Officer
- Survey Interviewer / Data Analyst
- Training and Development Officer
- Trauma Informed Support Worker
- Welfare Officer
- Workplace Rehabilitation Consultant
- Youth Worker
- Youth Custodial Officer – Dept. of Justice

Note: The Health Care and Social Assistance industry is the largest and fastest growing in Australia.

Multidiscipline Graduate Programs are also available to Psychology graduates. Recruitment usually commences from the beginning of final year. Useful links below.

- [A place of Opportunity \(WA State Govt.\)](#)
- [APS Graduate Streams \(Federal Govt.\)](#)
- Graduate Programs with Professional Services Firms e.g. [BDO](#), and [EY](#)